

Addressing Software Sustainability on Your Campus

Is your campus seeing an increasing number of research projects that include web-based applications? Does each group have to hire developers independently? This can be time consuming and inefficient.

You are not alone.

THERE IS A SOLUTION

Creating a central pool of expertise on your campus offers many benefits including:

- Great visibility for the institution's research activities
- Synergy between projects
- Shared resources, costs and expertise across departments
- Expertise that is otherwise difficult for individual projects to obtain
- Lower learning curves
- Ability to retain top-quality research computing support by providing interesting projects

NOW IS THE RIGHT TIME!

WE CAN HELP YOU!

- We can provide supplemental expertise where you don't have it.
- We can provide support for your journey to creating a campus-based group.
- We can provide ongoing advice based on campuses who have successfully created their own groups.

HOW TO START?

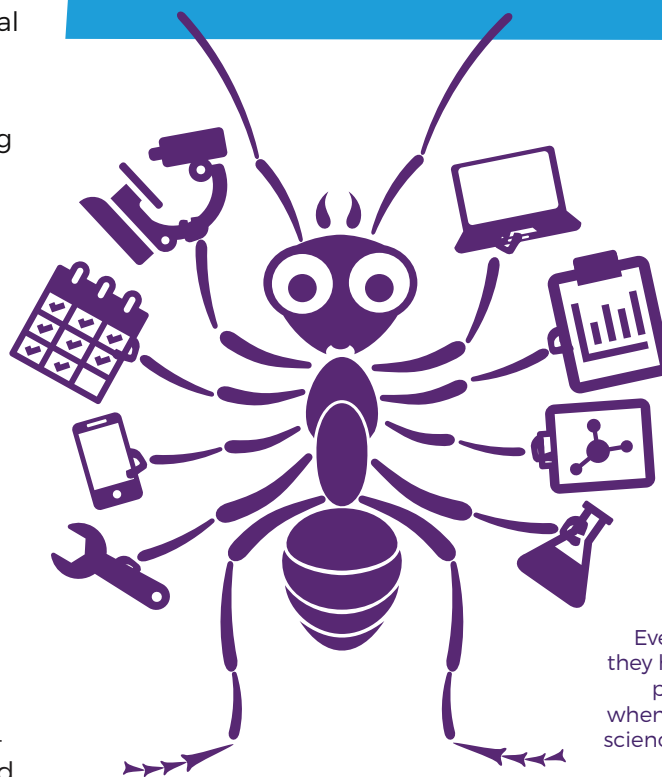
Contact us to request a free consultation, webinar, or on-campus visit to start your path toward sustainable gateway development.

INTERESTED? CONTACT US!

<http://sciencegateways.org/campusgroups>
help@sciencegateways.org

Science gateways are online, end-to-end solutions that provide broad access to advanced resources. They provide a community space for science and engineering research and education, allowing all to tackle today's challenging science questions.

Gateways are an increasingly common component of funded activities by many agencies. Individual PIs find it challenging to recruit and sustain teams that offer the diversity of expertise necessary for developing gateways.



Even ants wish they had an extra pair of hands when developing science gateways!

The Science Gateways Community Institute (SGCI) as an online and physical resource supports science gateways with free services for community building, consultancy as well as sharing expertise, technologies and practices.